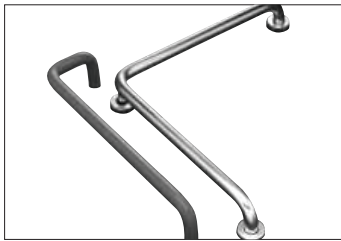
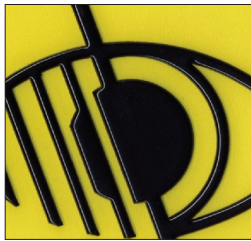
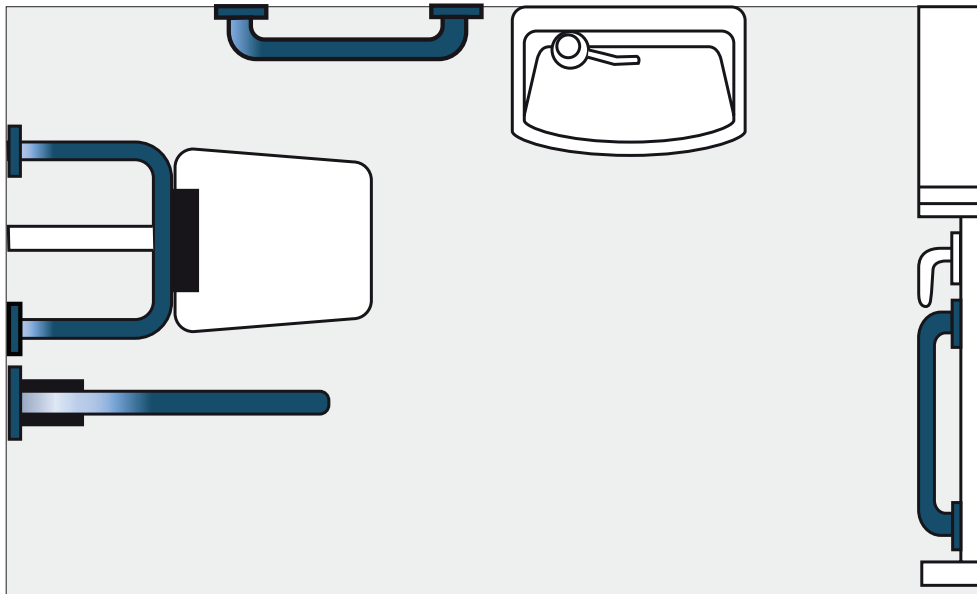


Access for All

Door Furniture | Doc M Pack | Grab Rails



Access for All door furniture

The Disability Discrimination Act (DDA), which has now been incorporated in to the Equality Act 2010, aims to make it a duty to avoid discrimination against disabled people and requires that reasonable adjustments to the design of buildings are made to provide this universal level of access.

Part M of the Equality Act Regulations "Access to and use of buildings", requires reasonable provision for access by people to buildings. Regardless of compliance with Building Regulations, there is also an obligation under the Equality Act for service providers and employers to consider barriers created by physical features in buildings.

A fully revised version of BS 8300 was published in February 2009 following a comprehensive review of the content. This document includes heavily modified guidance on ironmongery. Much of it relates to a relaxation in design, allowing a more flexible approach to the specification.

In general doors must be as easy to use for as many people as possible and a badly designed, positioned or fitted handle will exclude some people from opening or closing the door easily and independently.

Lever handle guidelines:

BS 8300 gives the example of a conventional round bar, return to door lever handle, but other designs are acceptable, as long as they meet the dimensional criteria:

- Fixing height 800-1050mm, with 900mm being the preferred position.
- Handle to be of a horizontal type:
- Hand grip zone of at least 95mm.
- Hand grip zone at least 45mm from face of door.
- Lever diameter at least 19mm
- Lock/latch backset at least 54mm from door edge.
- Handle to contrast visually with the face of the door by 15 points.

Pull handle guidelines:

BS 8300 gives the example of a conventional D shape pull handle, but other designs are acceptable, as long as they meet the dimensional criteria:

- Top end of pull handle no lower than 1300mm above the floor.
- Bottom end of pull handle no lower than 700mm and no higher than 100mm above the floor (effectively allowing 300mm pull handles).
- Vertical pull handle 19mm - 35mm diameter.
- Cranked pull handle 19mm - 35mm diameter.
- Hand grip zone at least 45mm from face of door.
- Handle to contrast visually with the face of the door by 15 points.

Other considerations:

L Shaped handles:

This type of handle is especially useful to a wheelchair user who will be able to close the door behind them more easily without having to turn and reach for a handle which is fitted to the edge of the door. A person who may have limited strength or mobility will also make better use of this type of handle, having the choice of the horizontal or the vertical section to use. Also the full length horizontal section will give support when the door is open and a person is passing through.

Thumbturns:

Should be avoided where possible as they can be difficult to operate for people with limited mobility or strength or people with arthritis. If they must be used, then make sure that they are as large and as easy to operate as possible.

Document M Pack

DOC M PACKS : GRAB BARS AND SAFETY RAILS

Building Regulations

The building regulations require all new public and commercial buildings to be equipped with WC facilities suitable for disabled people.

BS 8300 Regulation diagrams

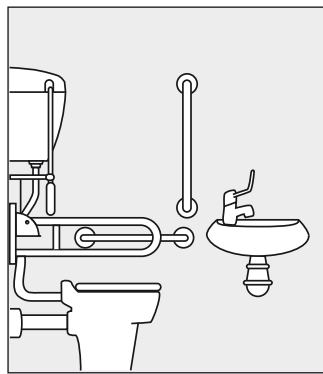
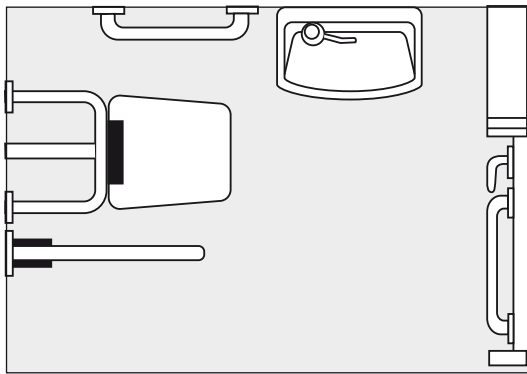
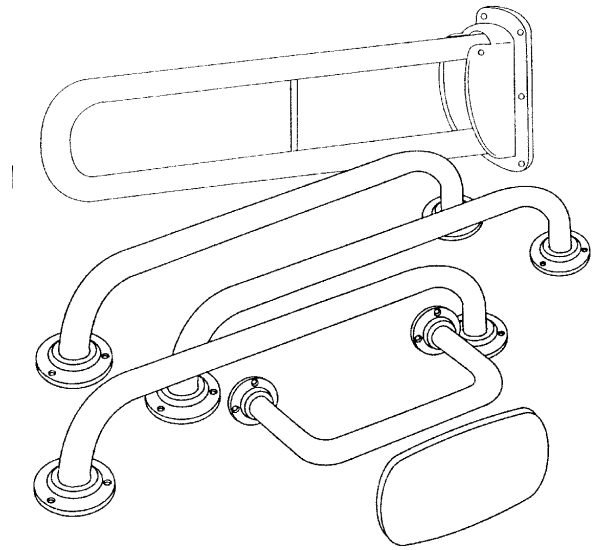
The standard layout reproduced from the building regulations, shows the hinged arm support, backrest rail and 3 no. grab rails. Other layouts may be varied to suit specific locations.

Doc 'M' set consists of the following rails:

1 No. 35mm dia x 760mm hinged drop down arm support. Mounted on the approach side of the WC the hinged arm locks in the upright position when not required.

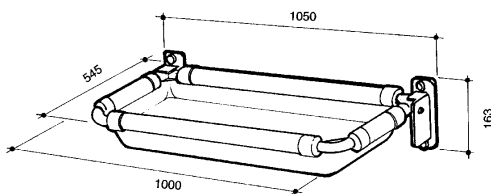
3 No. Grab rails 35mm dia x 600mm

1 No. Backrest rail 35mm dia 250mm x 400mm x 250mm. Supplied with or without cushion.



Document 'M' Pack set comprises:

- IA801 1 double arm drop down hinged rail 760x35mm dia
- IA802 1 backrest support rail 250x400x250x35mm dia
- IA803 Cushion for the above
- IA804 3 straight grab rails 600x35mm dia



IA805
Lift-up Baby Change Unit



IA806
Shower Seat



IA807
Shower Seat



FINISHES

Satin stainless steel, white nylon coated ribbed, polished stainless steel. Any RAL colour.



FIXINGS

To be sourced separately to suit site conditions. Earth wiring should be considered. We can assist with recommended fixing heights.



OPTIONS

Any other special needs catered for. Please contact a technical representative.

Grab rail options (35mm)

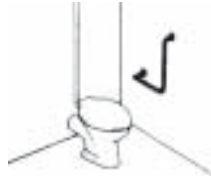
35MM DIAMETER 59 SERIES GRAB RAIL OPTIONS



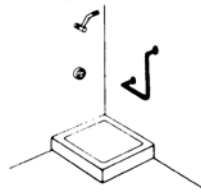
1. Wheel Chair Transfer Rail (Handed)



2. Backrest Rail



3. General Purpose Rail



4. WC Support Rail (Handed)



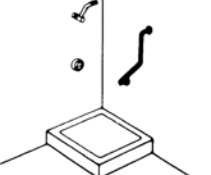
5. WC Support Rail (Handed)



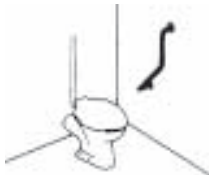
6. Backrest Rail with Cushion



7. WC Support Rail (Handed)



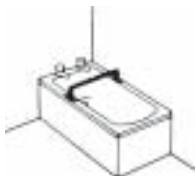
8. Dual Purpose Rail



9. Basin Rail



10. Shower Surround Rail



11. Bath Rail



12. Vertical Pole (Specify length required)



13. Multi Point Rail (Specify length required)



14. Bath Support Rail



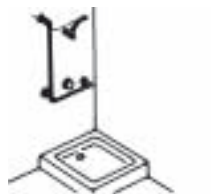
15. Bath Rail



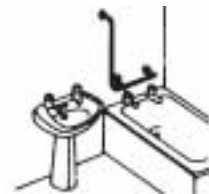
16. Vertical Pole



17. Corner Bath Rail (Handed)



18. Shower Rail



19. Corner Rail



Straight Grab Rails

	25mm dia	32mm dia	35mm dia
300mm	IA808-A	IA808-B	IA805-C
375mm	IA809-A	IA809-B	N/A
450mm	IA810-A	IA810-B	IA807-C
600mm	IA811-A	IA811-B	IA808-C
750mm	IA812-A	IA812-B	N/A
900mm	IA813-A	IA813-B	IA810-C

Special sizes & designs to order.



FINISHES

Satin stainless steel, white nylon coated ribbed, polished stainless steel. Any RAL colour.



OPTIONS

Manufactured according to site size and specific dimensions. Please consult with us, stating which option.

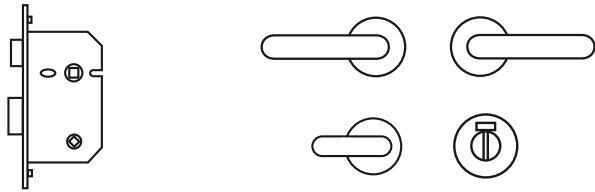


FIXINGS

To be sourced separately to suit site conditions. (Earth wiring should be considered).

Indicator Set Options

Set One



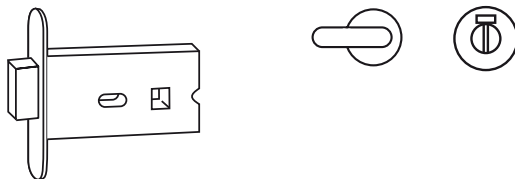
Bathroom lock with standard lever furniture with special needs internal thumbturn, and emergency release.

Set Two



Bathroom deadbolt with 8mm spindle follower, unsprung flip-up lever set and 8mm follower emergency release.

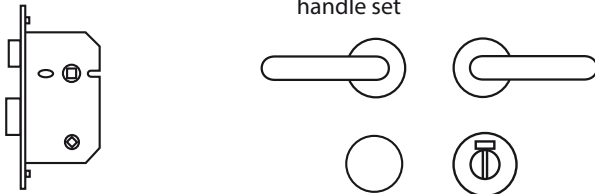
Set Three



Bathroom deadbolt with 5mm spindle, standard special needs internal thumbturn and emergency release.

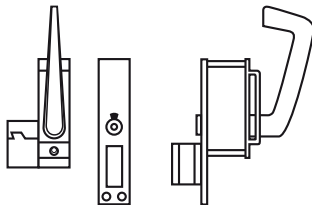
Set Four Bathroom Lock

19mm PAA set 4 chiltern lever handle set



Special bathroom lock with flip-up lever internal locking, internal lever and emergency release, with engraved sign disc.

Set Five (Hinged & sliding door option)



Face fixed facility lift-up lever (handed) with indicator and small pull handles.

Set Six (Sliding door option)



Claw action bathroom deadbolt with standard special needs internal thumbturn and emergency release.



FINISHES

Satin stainless steel, polished stainless steel, satin anodised aluminium, polished brass, satin anodised aluminium, polished anodised aluminium. Colour coated to any RAL colour.



OPTIONS

The above sets can be incorporated into most patterns of lever furniture.



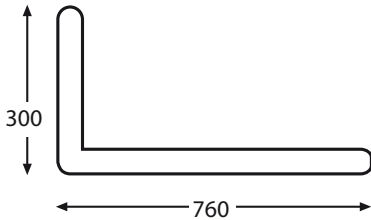
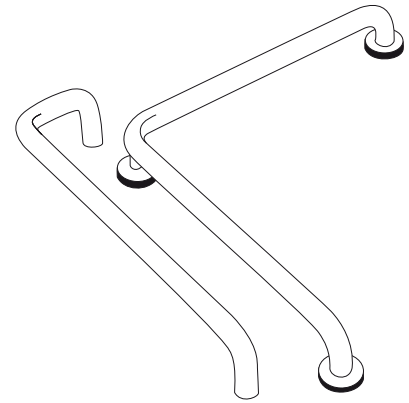
FIXINGS

All necessary fixings supplied.

L-Shaped Grab Handles

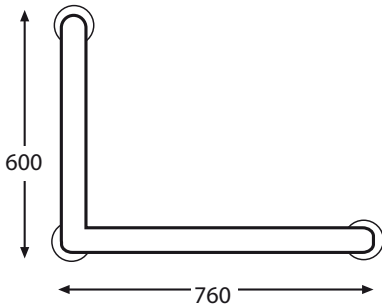


A range of pull handles for door fitting. These designs give greater coverage of the door surface and ease of use. The arrangements give the opportunity to pull or push a door on a horizontal, vertical or diagonal plane.



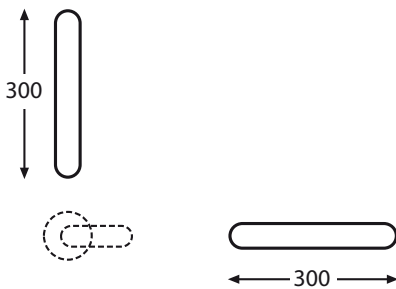
IA810 Face fixing on rose
IA811 Back to back fixing

(Handed left hand shown)



IA812 Face fixing on rose
IA813 Back to back fixing

(Handed left hand shown)



IA814 Face fixing on rose
IA815 Back to back fixing

Supplied non handed, for use with doors which have a lever/latch arrangement



FINISHES

To match door furniture.



FIXINGS



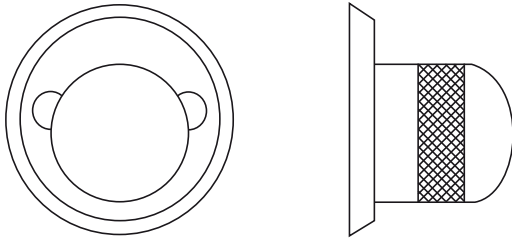
OPTIONS

A: 22mm dia.
B: 25mm dia.
C: 32mm dia.
D: 35mm dia.

Supplied to suit timber doors, for other door types please specify.

Clutch Thumbturn Mechanisms

IA820 Cylinder ring and turn
IA821 Indicator set and turn



<p>Exterior</p> <p>Key operates deadbolt and latchbolt. Lever handle retracts latchbolt. Holding the internal turn does not prevent the door being opened.</p>		<p>Interior</p> <p>Turn operates a deadbolt and latchbolt. Lever handle or knob retracts latchbolt.</p>
<p>Key operates a deadbolt. Holding the internal turn does not prevent the door being opened.</p>		<p>Turn operates deadbolt.</p>

Clutch thumbturn for use with lockcase, IL021-B and IL024-B, internal cylinder ring fitted externally. This allows the lock to be dismantled from the outside if required, in an emergency. Also available as bathroom set with external indicator and emergency release. Please specify your choice of lever furniture.

IA822 Dedicated lever accessory set
IL021 Lockcase

<p>Indicator with emergency release lever retracts latchbolt.</p>		<p>Lift lever to lock depress lever to release both bolts.</p>
---	--	--

 Finishes

Clutch turn IA822 Satin stainless steel.
Satin chrome, polished brass

Specially designed for use in mental health and institutional residences, the principal advantage lies in the cylinder clutch mechanism. Once inserted, the key renders the thumbturn inoperable. This enables the unlocking of the door even if the turn is held on the inside.



Available with euro and British oval cylinder types suite to a MK in various sizes. Please consult with your technical representative.

60mm Euro cylinder and turn
70mm Euro cylinder and turn
80mm Euro cylinder and turn

60mm British oval cylinder and turn
70mm British oval cylinder and turn
80mm British oval cylinder and turn

 Finishes

Satin nickel, polished chrome, polished brass, satin brass.

 Options

Can be incorporated in a master key suite with other cylinders in our range. Classroom function also available.

 Fixings

All necessary fixings supplied.

Lloyd Worrall
Unit 6, Denbigh Hall
Bletchley
MILTON KEYNES
MK3 7QT
T: 01908 643 364
F: 01908 643 643
E: miltonkeynes@lloydworrall.co.uk

Lloyd Worrall
Unit 13, Chamberlayne Road
Moreton Hall Ind. Est.
BURY ST EDMUNDS
IP32 7EY
T: 01284 762 002
F: 01284 762 003
E: bury@lloydworrall.co.uk

Lloyd Worrall
Units 10-11, Attercliffe Common Ind. Est.
Fell Road
SHEFFIELD
S9 2AL
T: 0114 244 3350
F: 0114 244 4219
E: sheffield@lloydworrall.co.uk

Lloyd Worrall
Unit 1, Bentinck Street Ind. Est.
off Chester Road, Hulme
MANCHESTER
M15 4LN
T: 0161 833 0270
F: 0161 832 3904
E: manchester@lloydworrall.co.uk

Lloyd Worrall
Units 13-16, Noble Street Ind. Est.
off Scotswood Road
NEWCASTLE UPON TYNE
NE4 7PD
T: 0191 226 0888
F: 0191 226 0803
E: newcastle@lloydworrall.co.uk

www.lloydworrall.co.uk

Yannedis
Unit 3, Woodford Trading Estate
Southend Road
Woodford Green
LONDON
IG8 8HF
T: 020 8550 8833
F: 020 8551 0026
E: ask@yannedis.com

www.yannedis.com

MB Architectural
14a Falcon Road
BELFAST
BT12 6RD
T: 028 9038 0200
F: 028 9038 0201
E: ask@mbarchitectural.com

www.mbarchitectural.com